



□■ OTIS

2016 COLLECTION

OTIS

WE ONLY MAKE PREMIUM
EYEWEAR FROM NATURALLY
SOURCED, DISTORTION-FREE,
SCRATCH RESISTANT, MINERAL
GLASS LENSES





OTIS

Mineral Glass is created from natural elements like sand and soda ash. It's endlessly recyclable and harmless to humans and animals alike.

It's high resistance to scratching and lack of distortion make it the world's best lens material.

It really does have to be Mineral Glass.

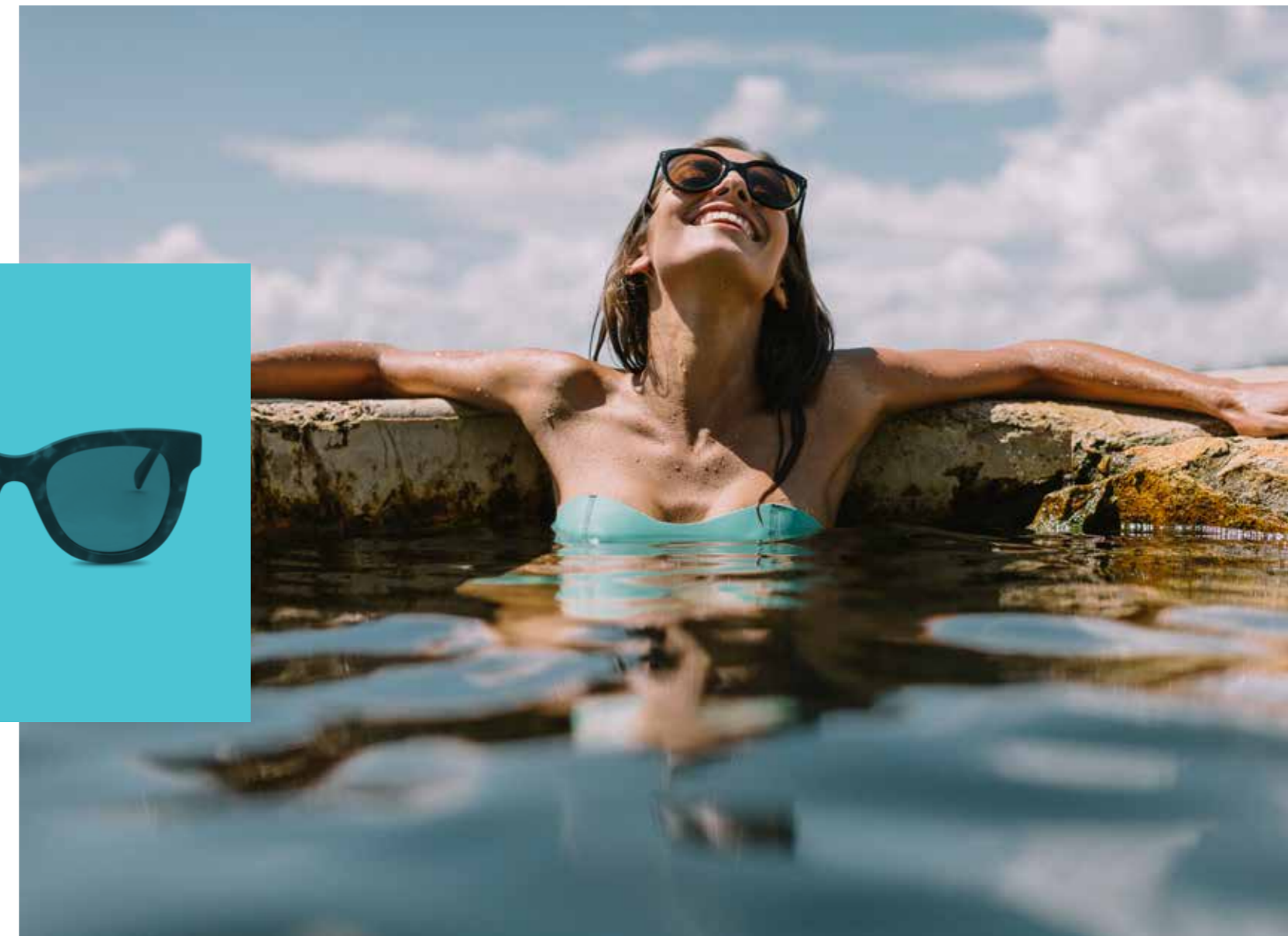
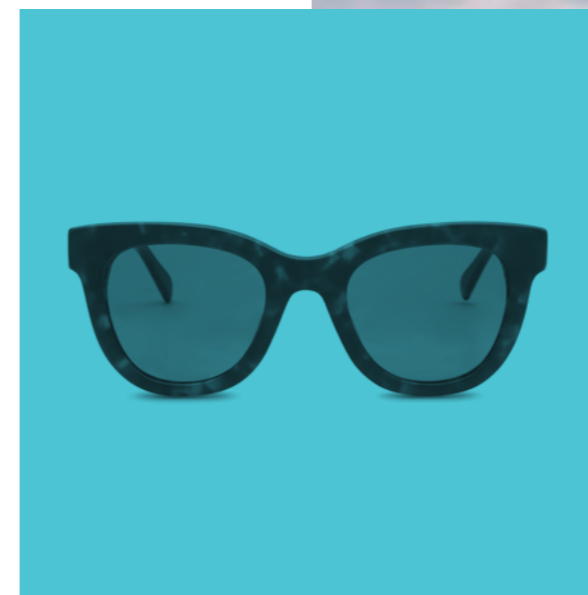
PLAY WITH GLASS

OTIS' new campaign "Play with Glass" is a statement that symbolises our lifestyle and the act of having fun, pairing it with OTIS' unique product feature - Mineral Glass Lenses. It's about living an active lifestyle and viewing it through a distortion free, scratch resistant, mineral glass lens. Indirectly this statement can also be taken as the spirit of youthful rebellion, playing with something that is potentially dangerous. The old expression - you're playing with fire.

"Play with Glass" was conceptualised for retail. We bring our campaign message to life at the point of sale with original interactive displays. Our aim is to educate the customer by enabling them to experience the benefits of Mineral Glass in a fun and interactive way.

#playwithglass

OTIS





MINERAL GLASS LENSES PROVIDE THE MOST

DISTORTION FREE

VISION OF ANY LENS MATERIAL IN THE WORLD.



MINERAL GLASS IS THE MOST

SCRATCH RESISTANT

LENS MATERIAL IN THE WORLD.



MISSING PIECES

NEW



frame: coffee tort lens: tropical brown
RRP: \$189.95 code: 93-1602



frame: shiny black lens: cool grey
RRP: \$189.95 code: 93-1604



frame: matte black lens: cool grey
RRP: \$189.95 code: 93-1605

MISSING PIECES FEATURES

- Mineral glass lens
- 6 Base lens curve
- Standard: category 3 lenses
- 100% UVA / UVB protection
- Handmade acetate frame
- Vissottica Hinges with stainless steel screws



MISSING PIECES





NOWHERE TO RUN



frame: caramel lens: tropical brown
RRP: \$189.95 code: 89-1503



frame: matte amber tort lens: tropical brown
RRP: \$189.95 code: 89-1502



frame: black lens: cool grey
RRP: \$189.95 code: 89-1501

NOWHERE TO RUN FEATURES

- Mineral glass lens
- 6 Base lens curve
- Standard: category 3 lenses
- 100% UVA / UVB protection
- Handmade acetate frame
- Vissottica Hinges with stainless steel screws



TEST OF TIME

NEW

frame: black lens: cool grey
RRP: \$189.95 code: 92-1601



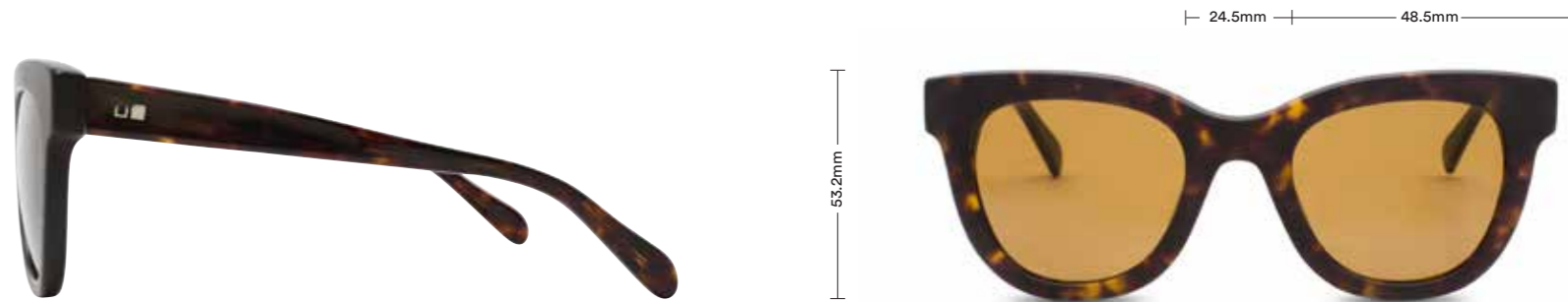
frame: matte amber tort lens: tropical brown
RRP: \$189.95 code: 92-1603

TEST OF TIME FEATURES

- Mineral glass lens
- 6 Base lens curve
- Standard: category 3 lenses
- 100% UVA / UVB protection
- Handmade acetate frame
- Vissottica Hinges with stainless steel screws



TEST OF TIME



MONA

NEW

frame: matte dark rum tort lens: tropical brown
RRP: \$189.95 code: 94-1604



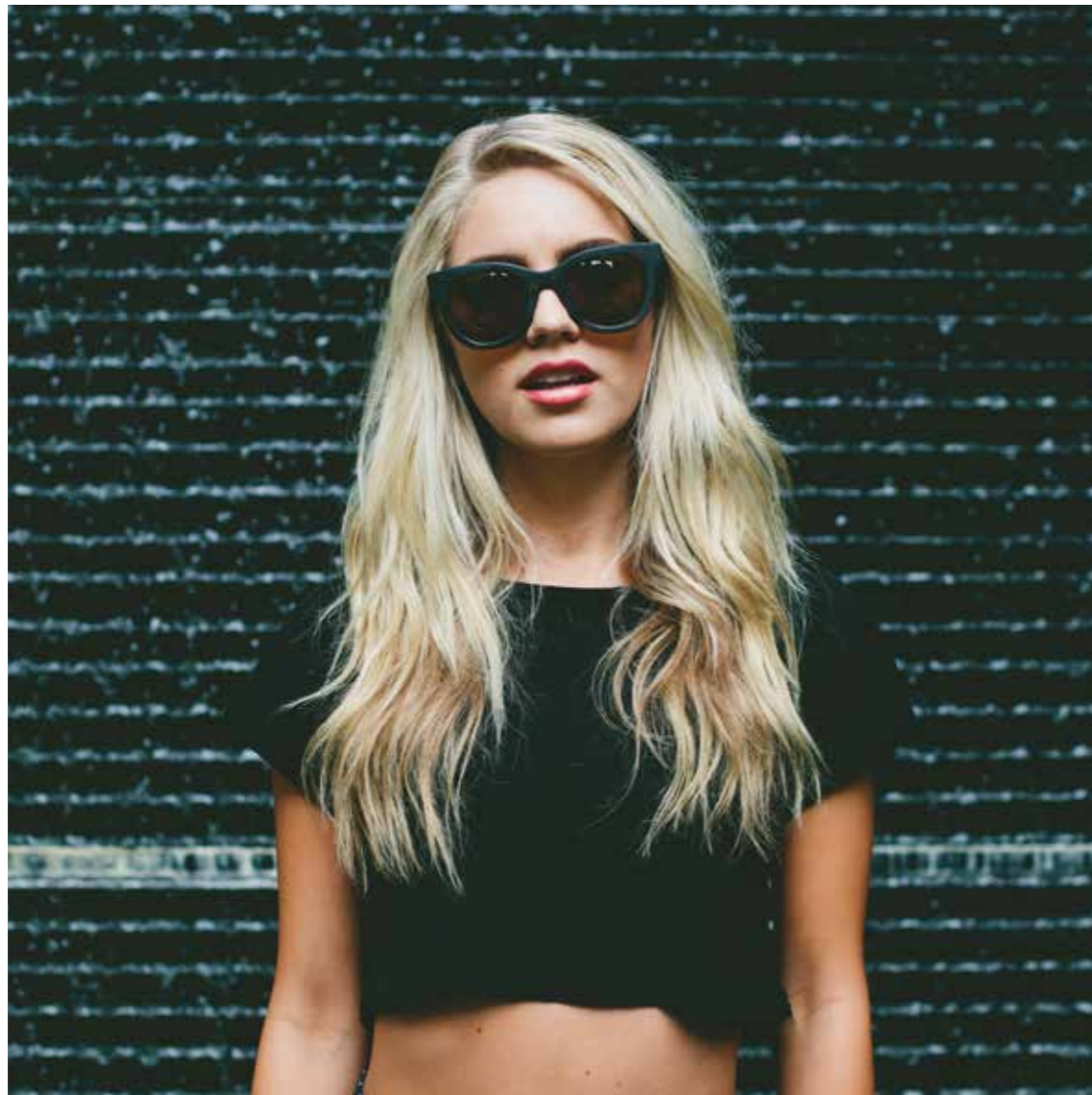
frame: matte black lens: cool grey
RRP: \$189.95 code: 94-1601



frame: shiny black lens: cool grey
RRP: \$189.95 code: 94-1603

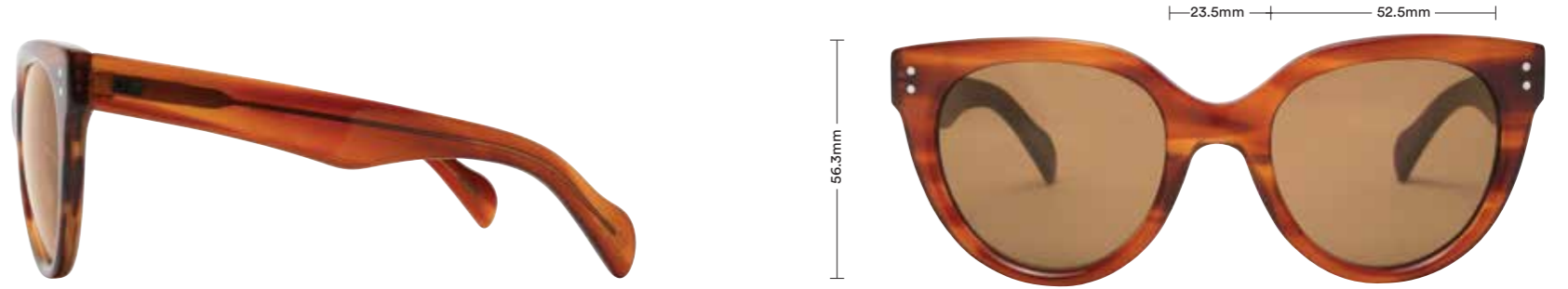
MONA FEATURES

- Mineral glass lens
- 6 Base lens curve
- Standard: category 3 lenses
- 100% UVA / UVB protection
- Handmade acetate frame
- Vissottica Hinges with stainless steel screws



MONA





SKINNY DIP

NEW

frame: havana tort lens: tropical brown
RRP: \$179.95 code: 95-1603



frame: shiny black lens: tropical brown
RRP: \$179.95 code: 95-1601



frame: black tort lens: cool grey
RRP: \$179.95 code: 95-1602

SKINNY DIP FEATURES

- Mineral glass lens
- 6 Base lens curve
- Standard: category 3 lenses
- 100% UVA / UVB protection
- Handmade acetate frame
- Vissottica Hinges with stainless steel screws





YOUNG BLOOD



frame: woodland matte lens: tropical brown
RRP: \$189.95 code: 83-1403



NEW
frame: matte black / rust lens: cool grey
RRP: \$189.95 code: 83-1601



frame: black / white lens: cool grey
RRP: \$189.95 code: 83-1402



frame: black lens: cool grey
RRP: \$189.95 code: 83-1401



frame: matte black lens: cool grey
RRP: \$189.95 code: 83-1404

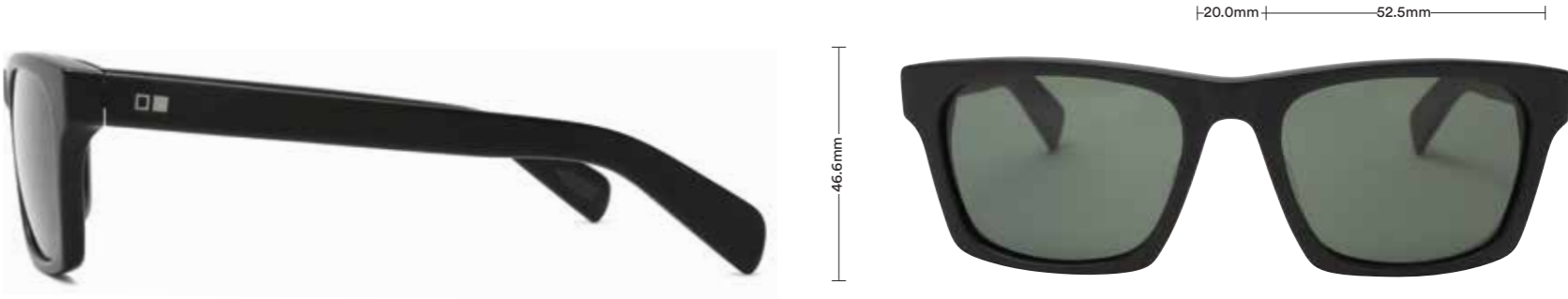
YOUNG BLOOD FEATURES

- Mineral glass lens
- 6 Base lens curve
- Standard: category 3 lenses
- 100% UVA / UVB protection
- Injection moulded grilamid frame
- Vissottica Hinges with stainless steel screws



YOUNG BLOOD





DIVE BAR

NEW

frame: matte black lens: cool grey
RRP: \$179.95 code: 97-1604



frame: matte coffee tort lens: tropical brown
RRP: \$179.95 code: 97-1605



frame: shiny / matte black lens: grey polarised
RRP: \$289.95 code: 97-1603P

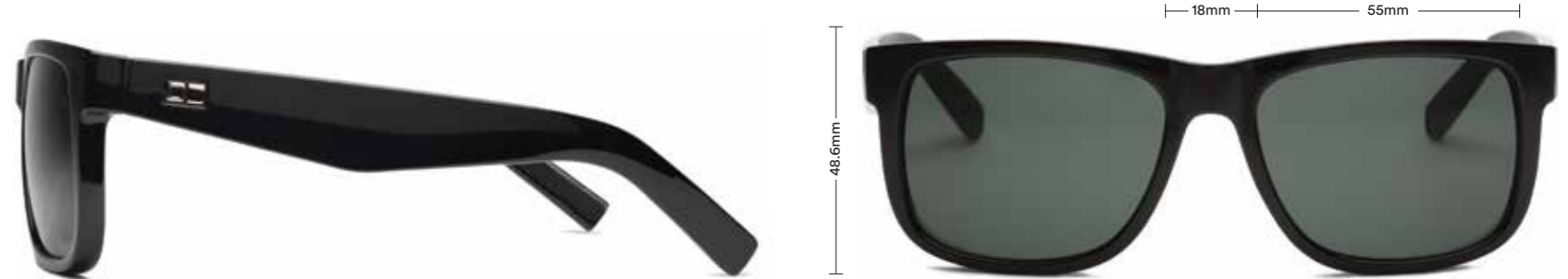
DIVE BAR FEATURES

- Mineral glass lens
- 6 Base lens curve
- Standard: category 3 lenses
- 100% UVA / UVB protection
- Handmade Italian acetate frame
- Vissottica Hinges with stainless steel screws



DIVE BAR





PARADISCO



POLAR

frame: black lens: grey polarised
RRP: \$289.95 code: 86-1508P



NEW frame: matte black lens: cool grey
RRP: \$179.95 code: 86-1601



frame: woodland matte lens: tropical brown
RRP: \$179.95 code: 86-1503



frame: shiny / matte black lens: cool grey
RRP: \$179.95 code: 86-1501

PARADISCO FEATURES

- Mineral glass lens
- 6 Base lens curve
- Standard: category 3 lenses
- 100% UVA / UVB protection
- Injection moulded grilamid frame
- Vissottica Hinges with stainless steel screws



frame: woodland matte lens: tropical brown
RRP: \$169.95 code: 81-1303



frame: black lens: cool grey
RRP: \$169.95 code: 81-1301

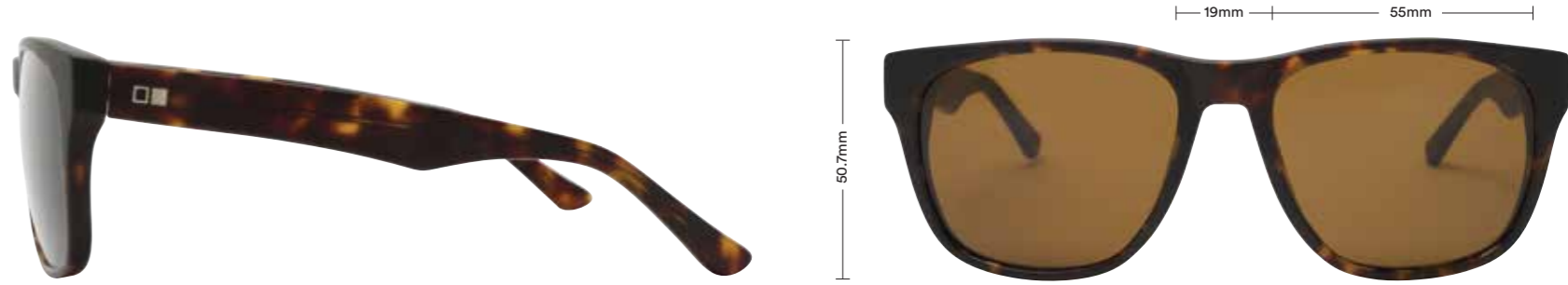


frame: matte black lens: grey polarised
RRP: \$279.95 code: 81-1509P



frame: matte tort lens: brown polarised
RRP:\$279.95 code: 81-1408P

- LAST NIGHT FEATURES**
- Mineral glass lens
 - 6 Base lens curve
 - Standard: category 3 lenses
 - 100% UVA / UVB protection
 - Injection moulded grilamid frame
 - Vissottica Hinges with stainless steel screws



MODERN THEORY

NEW frame: matte dark rum lens: tropical brown
RRP: \$189.95 code: 88-1601



frame: black tort lens: cool grey
RRP: \$189.95 code: 88-1503



frame: black lens: cool grey
RRP: \$189.95 code: 88-1501

MODERN THEORY FEATURES

- Mineral glass lens
- 6 Base lens curve
- Standard: category 3 lenses
- 100% UVA / UVB protection
- Handmade acetate frame
- Vissottica Hinges with stainless steel screws





THE BEAT

frame: matte rust lens: tropical brown
RRP: \$189.95 code: 73-1305



NEW frame: matte black tort lens: cool grey
RRP: \$189.95 code: 73-1504



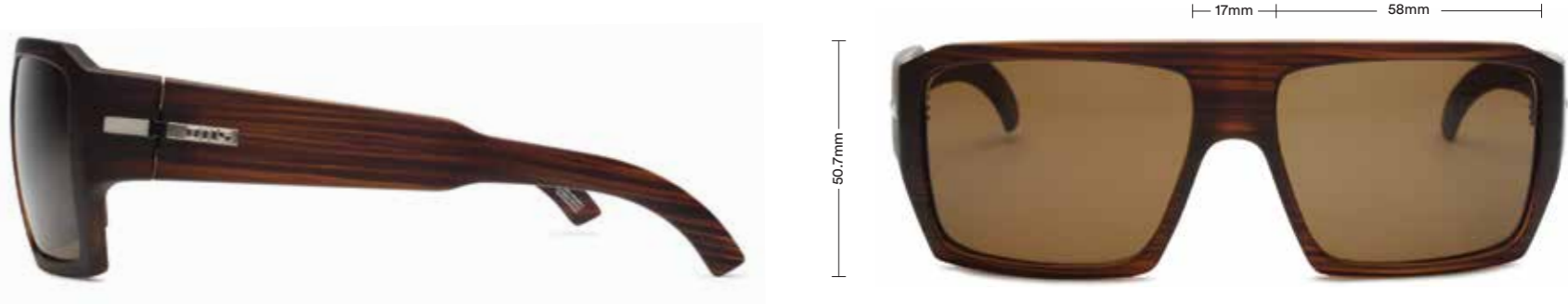
frame: black lens: cool grey
RRP: \$189.95 code: 73-1201



POLAR frame: black lens: grey polarised
RRP: \$299.95 code: 73-1308P

THE BEAT FEATURES

- Mineral glass lens
- 6 Base lens curve
- Standard: category 3 lenses
- 100% UVA / UVB protection
- Handmade acetate frame
- Vissottica Hinges with stainless steel screws



LOUIE



frame: woodland matte lens: tropical brown
RRP: \$189.95 code: 65-1503



frame: black / white lens: cool grey
RRP: \$189.95 code: 65-1005



frame: black lens: cool grey
RRP: \$189.95 code: 65-1001



frame: black lens: grey polarised
RRP: \$299.95 code: 65-1208P

LOUIE FEATURES

- Mineral glass lens
- 6 Base lens curve
- Standard: category 3 lenses
- 100% UVA / UVB protection
- Injection moulded grilamid frame
- Vissottica Hinges with stainless steel screws



CAPITOL

CAPITOL FEATURES

- Mineral glass lens
- 8 Base lens curve
- Standard: category 3 lenses
- 100% UVA / UVB protection
- Injection moulded grilamid frame
- Vissottica Hinges with stainless steel screws

NEW frame: woodland matte lens: tropical brown
RRP: \$179.95 code: 87-1601



frame: shiny black lens: cool grey
RRP: \$179.95 code: 87-1511



frame: matte black / matte olive lens: cool grey
RRP: \$179.95 code: 87-1501



frame: matte tort lens: tropical brown
RRP: \$179.95 code: 87-1502



POLAR
frame: tort lens: brown polarised
RRP: \$289.95 code: 87-1528P



POLAR
frame: shiny / matte black lens: grey polarised
RRP: \$289.95 code: 87-1508P



EL CAMINO

NEW

POLAR

frame: matte black lens: grey polarised
RRP: \$279.95 code: 98-1601P



frame: woodland matte lens: tropical brown
RRP: \$169.95 code: 98-1602



frame: black lens: cool grey
RRP: \$169.95 code: 98-1603

EL CAMINO FEATURES

- Mineral glass lens
- 8 Base lens curve
- Standard: category 3 lenses
- 100% UVA / UVB protection
- Injection moulded grilamid frame
- Vissottica Hinges with stainless steel screws



THE INSIDER



POLAR

frame: woodland matte lens: brown polarised
RRP: \$289.95 code: 90-1503P



NEW

frame: woodland matte lens: tropical brown
RRP: \$179.95 code: 90-1602



NEW

frame: matte black lens: cool grey
RRP: \$179.95 code: 90-1601

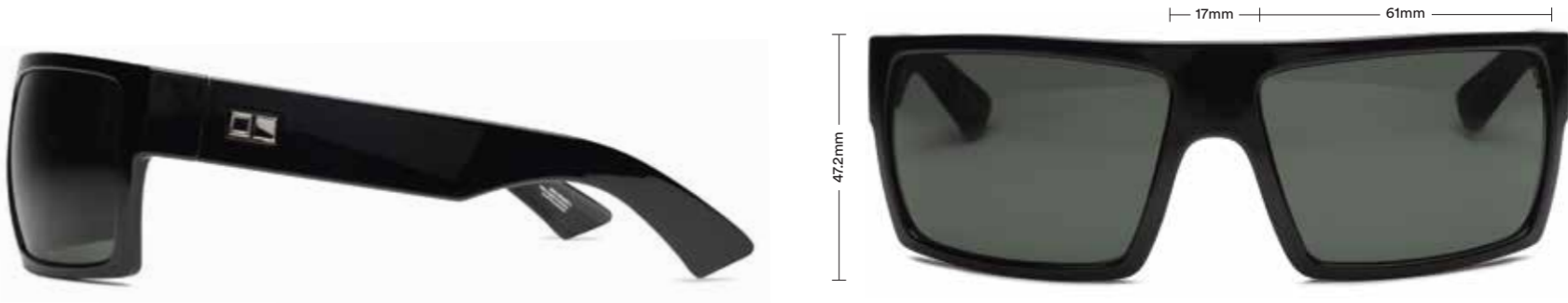


POLAR

frame: black lens: grey polarised
RRP: \$289.95 code: 90-1508P

THE INSIDER FEATURES

- Mineral glass lens
- 8 Base lens curve
- Standard: category 3 lenses
- 100% UVA / UVB protection
- Injection moulded grilamid frame
- Vissottica Hinges with stainless steel screws



THE VANISH

frame: shiny black / matte black lens: cool grey
RRP: \$169.95 code: 91-1501



frame: woodland matte lens: tropical brown
RRP: \$169.95 code: 91-1503



frame: black lens: grey polarised
RRP: \$279.95 code: 91-1508P

THE VANISH FEATURES

- Mineral glass lens
- 8 Base lens curve
- Standard: category 3 lenses
- 100% UVA / UVB protection
- Injection moulded grilamid frame
- Vissottica Hinges with stainless steel screws

COLLECTION OVERVIEW

MISSING
PIECES

handmade acetate frame
6 base curve



frame: coffee tort
lens: tropical brown
RRP: \$189.95
code: 93-1602

NOWHERE TO
RUN

handmade acetate frame
6 base curve



frame: caramel
lens: tropical brown
RRP: \$189.95
code: 89-1503

TEST OF
TIME

handmade acetate frame
6 base curve



frame: black
lens: cool grey
RRP: \$189.95
code: 92-1601

MONA

handmade acetate frame
6 base curve



frame: matte dark rum tort
lens: tropical brown
RRP: \$189.95
code: 94-1604

SKINNY
DIP

injection moulded frame
6 base curve



frame: havana tort
lens: tropical brown
RRP: \$179.95
code: 95-1603

YOUNG
BLOOD

injection moulded frame
6 base curve



frame: matte black / rust
lens: cool grey
RRP: \$189.95
code: 83-1601

YOUNG
BLOOD

injection moulded frame
6 base curve



frame: matte black
lens: cool grey
RRP: \$189.95
code: 83-1404



frame: shiny black
lens: cool grey
RRP: \$189.95
code: 93-1604



frame: matte amber tort
lens: tropical brown
RRP: \$189.95
code: 89-1502



frame: matte amber tort
lens: tropical brown
RRP: \$189.95
code: 92-1603



frame: matte black
lens: cool grey
RRP: \$189.95
code: 94-1601



frame: shiny black
lens: tropical brown
RRP: \$179.95
code: 95-1601



frame: black / white
lens: cool grey
RRP: \$189.95
code: 83-1402



frame: matte black
lens: cool grey
RRP: \$189.95
code: 93-1605



frame: black
lens: cool grey
RRP: \$189.95
code: 89-1501



frame: shiny black
lens: cool grey
RRP: \$189.95
code: 94-1603



frame: black tort
lens: cool grey
RRP: \$179.95
code: 95-1602



frame: black
lens: cool grey
RRP: \$189.95
code: 83-1401



frame: woodland matte
lens: tropical brown
RRP: \$189.95
code: 83-1403

COLLECTION OVERVIEW

DIVE
BAR

handmade acetate frame
6 base curve



frame: matte black
lens: cool grey
RRP: \$179.95
code: 97-1604

PARADISCO

injection moulded frame
6 base curve



frame: shiny / matte black
lens: cool grey
RRP: \$179.95
code: 86-1501

LAST
NIGHT

injection moulded frame
6 base curve



frame: woodland matte
lens: tropical brown
RRP: \$169.95
code: 81-1303

LAST
NIGHT

injection moulded frame
6 base curve



frame: matte black tort
lens: cool grey
RRP: \$169.95
code: 81-1601

MODERN
THEORY

handmade acetate frame
6 base curve



frame: black tort
lens: cool grey
RRP: \$189.95
code: 88-1503

THE
BEAT

handmade acetate
frame
6 base curve



frame: matte rust
lens: tropical brown
RRP: \$189.95
code: 73-1305

LOUIE

injection moulded frame
6 base curve



frame: woodland matte
lens: tropical brown
RRP: \$189.95
code: 65-1503



frame: matte coffee tort
lens: tropical brown
RRP: \$179.95
code: 97-1605



frame: woodland matte
lens: tropical brown
RRP: \$179.95
code: 86-1503



frame: black
lens: cool grey
RRP: \$169.95
code: 81-1301



frame: matte dark rum
lens: tropical brown
RRP: \$189.95
code: 88-1601



frame: black
lens: cool grey
RRP: \$189.95
code: 73-1201



frame: black / white
lens: cool grey
RRP: \$189.95
code: 65-1005



frame: shiny / matte black
lens: grey polarised
RRP: \$289.95
code: 97-1603P



frame: matte black
lens: cool grey
RRP: \$179.95
code: 86-1601



frame: matte tort
lens: brown polarised
RRP: \$279.95
code: 81-1408P



frame: black
lens: cool grey
RRP: \$189.95
code: 88-1501



frame: matte black tort
lens: cool grey
RRP: \$189.95
code: 73-1504



frame: black
lens: cool grey
RRP: \$189.95
code: 65-1001



frame: black
lens: grey polarised
RRP: \$289.95
code: 86-1508P



frame: matte black
lens: grey polarised
RRP: \$279.95
code: 81-1509P



frame: black
lens: grey polarised
RRP: \$299.95
code: 73-1308P



frame: black
lens: grey polarised
RRP: \$299.95
code: 65-1208P



COLLECTION OVERVIEW

CAPITOL

injection moulded frame
8 base curve



frame: matte black / olive
lens: cool grey
RRP: \$179.95
code: 87-1501



frame: matte tort
lens: tropical brown
RRP: \$179.95
code: 87-1502



frame: tort
lens: brown polarised
RRP: \$289.95
code: 87-1528P



CAPITOL

injection moulded frame
8 base curve



frame: woodland matte
lens: tropical brown
RRP: \$179.95
code: 87-1601



frame: shiny black
lens: cool grey
RRP: \$179.95
code: 87-1511



frame: shiny / matte black
lens: grey polarised
RRP: \$289.95
code: 87-1508P



EL CAMINO

injection moulded frame
8 base curve



frame: black
lens: cool grey
RRP: \$179.95
code: 98-1603



frame: woodland matte
lens: tropical brown
RRP: \$179.95
code: 98-1602



frame: matte black
lens: grey polarised
RRP: \$279.95
code: 98-1601P



THE INSIDER

injection moulded frame
8 base curve



frame: matte black
lens: cool grey
RRP: \$179.95
code: 90-1601



frame: woodland matte
lens: tropical brown
RRP: \$179.95
code: 90-1602



frame: black
lens: grey polarised
RRP: \$289.95
code: 90-1508P



THE VANISH

injection moulded frame
8 base curve



frame: shiny / matte black
lens: cool grey
RRP: \$169.95
code: 91-1501



frame: woodland matte
lens: tropical brown
RRP: \$169.95
code: 91-1503



frame: black
lens: grey polarised
RRP: \$279.95
code: 91-1508P



frame: woodland matte
lens: brown polarised
RRP: \$289.95
code: 90-1503P



LIFETIME WARRANTY

Our goods come with guarantees that cannot be excluded under Australian Consumer Law. You are entitled to a replacement or refund for a major failure and for compensation for any other reasonably foreseeable loss or damage. You are also entitled to have the goods repaired or replaced if the goods fail to be of acceptable quality and the failure does not amount to a major failure.

OTIS sunglasses are constructed using the highest quality materials available. Each component is individually quality checked before being carefully packaged, ready for sale. OTIS sunglasses have a lifetime warranty against defects in materials and workmanship. Damage to lenses, frames and other components due to normal wear and tear are not covered under the warranty. All warranty claims must be accompanied with a proof of purchase.

Where a warranty claim is accepted, OTIS has the right to repair or replace at no cost to you. If not deemed to be a valid warranty, OTIS will offer a suitable replacement at a reasonable charge subject to availability.

Scratched and broken lenses are not covered under warranty. Mineral glass is the most scratch resistant lens material available, but it is not scratch proof. All OTIS lenses exceed the strictest Australian, USA, and European standards for quality and strength. However, mineral glass lenses can scratch or crack if not cared for properly

Simply email cs@otiseyewear.com to obtain a return address and paperwork for your return. OTIS offers a Reply Paid service for all returns, but is not liable for goods in transit. OTIS recommends returns to be safely packaged and insured (at customers expense). All return paperwork must include full name, return address (no PO Box), contact number, email address and Proof of Purchase if a warranty is being claimed.

For any further enquiries: cs@otiseyewear.com

ABOUT MINERAL GLASS LENSES

Our standard fixed tint mineral glass lenses are 2.0mm thick and thermally toughened. Our polarised lenses consist of two chemically toughened glass wafers laminated with a polarised film under heat and pressure - the result is a 2.1mm thick lens. It should also be noted that once our lenses are cut to fit the frames, the edges of the lenses are then sealed to stop any water/moisture getting between the layers.

• MINERAL GLASS •

A hybrid glass half the weight & twice the strength of standard crown glass - making it the perfect lens material.

• DISTORTION FREE •

Precision ground mineral glass provides distortion free vision and is the most stable lens material available.

• SCRATCH RESISTANT •

Glass is the most scratch resistant lens material in the world.

• PERMANENT TINTING •

Mineral Glass provides the most permanent and stable tints of any lens - OTIS lenses will not warp, peel or fade over time.

• CHEMICAL / THERMAL HARDENING

Two processes by which the natural toughness of glass is even further enhanced to increase durability.

LENS TECHNOLOGY / TINT QUALITIES

COOL GREY

Versatile, general purpose lens providing natural vision and true colours.

TROPICAL BROWN

A contrast enhancing lens that sharpens detail by blocking glare and scattered blue light making it ideal for bright conditions.

GREY POLARISED

Reduces glare from both direct and reflected light. Polarising filters cut glare from the surface of water, snow and bitumen roads. Ideal for driving and high glare situations.

BROWN POLARISED

A contrast enhancing lens that sharpens detail by blocking glare and scattered blue light, making it ideal for brighter conditions. Reduces glare from both direct and reflected light.

STANDARDS

OTIS sunglasses meet or exceed these standards: US Standard ANSI Z80.3 (1986), Australian & New Zealand Standard AS/NZS1067 (2003), European Standard BSEN.1836 (1997). All OTIS sunglasses bear the CE mark which demonstrates that our products meet the requirement of the European directive 89/686 EEC and meet the requirements of prEN 1836:1996

FRAME SHAPE / MATERIALS & CONSTRUCTION



TR90 GRILAMID FRAMES

High performance and low weight ratio. TR90's high-performance property profile and processability makes it an ideal optical engineering plastic. The transparency, rigidity and impact strength of Grilamid compare favourably to other transparent polymers like polycarbonate. It is the lightest engineering plastic in existence, maximising wearer comfort.



HANDMADE ACETATE FRAMES

Made with premium quality acetate (originating from renewable resources wood pulp & cotton fibre), the ideal material for making durable eyewear. Its hue is embedded within the product rather than sprayed onto the surface, retaining colour brightness and preventing peeling & fading. OTIS handmade frames have stainless steel wires injected into the temples for adjustability - a task best performed by an Eye Care Professional.



VISSOTTICA HINGES WITH STAINLESS STEEL SCREWS

OTIS frames are produced with high quality 5 and 7 barrel hinges. These premium grade Vissottica brand hinges are extremely durable and boast 100% corrosion resistance.



ABOUT 'BASE CURVE'

Lens 'Base Curve' is the measure of the general shape of a lens. The Lens Base is the front curve of the lenses (measured in "dioptries"). You can see the variations in the models displayed above.



6 BASE OR 8 BASE: WHAT'S THE DIFFERENCE?

The 8 base lenses have a more curved frame while still providing distortion free vision. 6 base lenses are generally flatter across the front.

BRAND AMBASSADORS

LUKE DAVIS
@lukedavisthegrey



DOMINIQUE FALUDI
@dominiquelissa



ADAM BENNETTS
@misterbennetts



MADISON LOUCH
@madilouch



ASHER PACEY
@asher_pacey



MITCH CREWS
@mitchcrews

CONTACT

AUSTRALASIA

Phone: +61 8 9756 7311
Fax: +61 8 9756 7643
Sales: sales@otiseyewear.com
Customer Service: cs@otiseyewear.com

NEW ZEALAND

Phone: +64 212 457 873
Email: alexanderbrent75@gmail.com

JAPAN

Phone: +81 3 5575 2033
Email: taka@4tune-int.com

USA

Phone: +760 806 9283
Fax: +760 806 9284
Sales: sales@leisurecollectiveinc.com
Customer Service: cs@leisurecollectiveinc.com

ONLINE / SOCIAL

- otiseyewear.com
- @otiseyewear
- facebook.com/Otis-Eyewear
- @otiseyewear

WITH THANKS

Fashion Photography: Mark Clinton / Julian Martin
Justin Jay / Simon 'Swilly' Williams
Product Photography: Richard Gale
Models: Madison Louch / Dominique Faludi
Catalogue Design: Jay Taplin
Shot on location: Oceanside, California / North Shore, Hawaii
Coolangatta & Manly, NSW

